

Different Faces

A ♩ = ca. 120

5

9

13

B

mp cresc.

17

ff *sff p* *ff* *sff p* *ff* *sff p* *ff*

4

27

sim. *pp*

C **D** ♩ = ca. 96

17 40

89

15

112

mf

119

125

E ♩ = ca. 144

3 3 3 4

mf

135

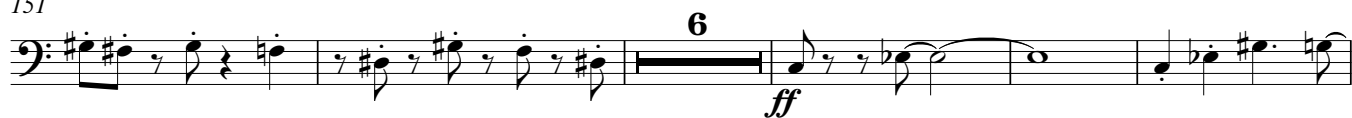
141

2 146

Trombone 4



151



162



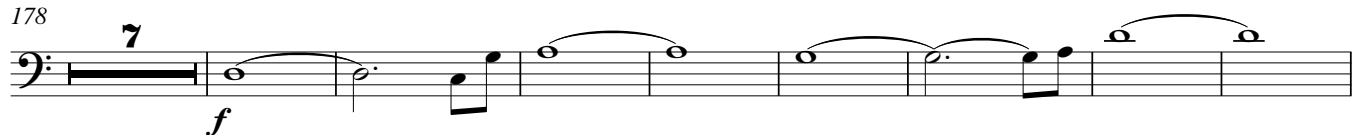
167



172



178



193

217 **H** $\text{♩} = \text{ca. } 120$ 

227



237



245



253



259

